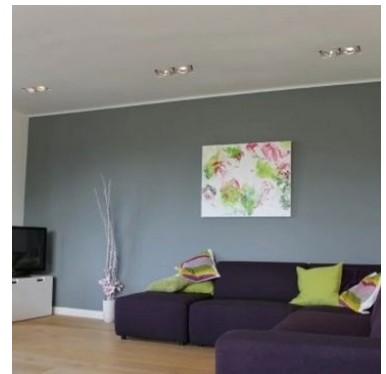
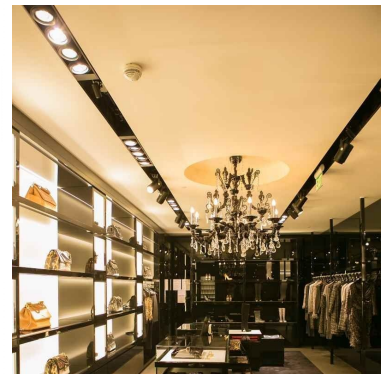
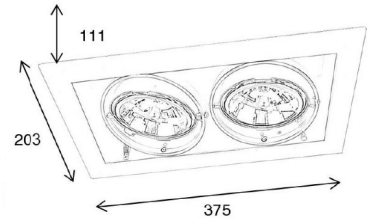


## Downlight Led 4000 Kelvin **227.00 €Ex VAT**

### Downlight led



#### FEATURES

<b>Brand</b>	Spots
<b>Base</b>	
<b>Fitting</b>	
<b>Color</b>	Gris
<b>Ref</b>	spo-enc-led-2893
<b>ID</b>	2893
<b>Delivery schedule</b>	1-3 working days
<b>Category</b>	Downlight led
<b>Type</b>	Store lighting

#### DETAIL

Don't hesitate to contact us for more information about our professional lighting ranges for your points of sale.

Our LED spotlights are guaranteed for 3 years, lifetime 50,000 hours.

Are you looking for a modular solution that allows you to adapt your lighting to the configuration and layout of your sales area or do you simply not have a false ceiling?

#### DESCRIPTION

**LED 4000 Kelvin Recessed Spotlight - Lumens 1100**  
Moon Double Recessed Spotlight 2x1100Lm 4000K Grey

Cardanic recessed spotlight for AR111 light source.

#### Features:

- Recessed spotlight mounting
- Wattage 2 x 7W
- Light colour Neutral white
- Kelvin 4000K
- Lumens 1100
- Dimensions WxDxH 210x230x100mmv
- Saw size LxBv 201x155mm
- IP rating IP 20

**Downlight Led 4000 Kelvin**

Downlight led - Photo n° 1



FEATURES

Brand	Spots
Base	
Fitting	
Color	Gris
Ref	spo-enc-led-2893
ID	2893
Delivery schedule	1-3 working days
Category	Downlight led
Type	Store lighting

DETAIL

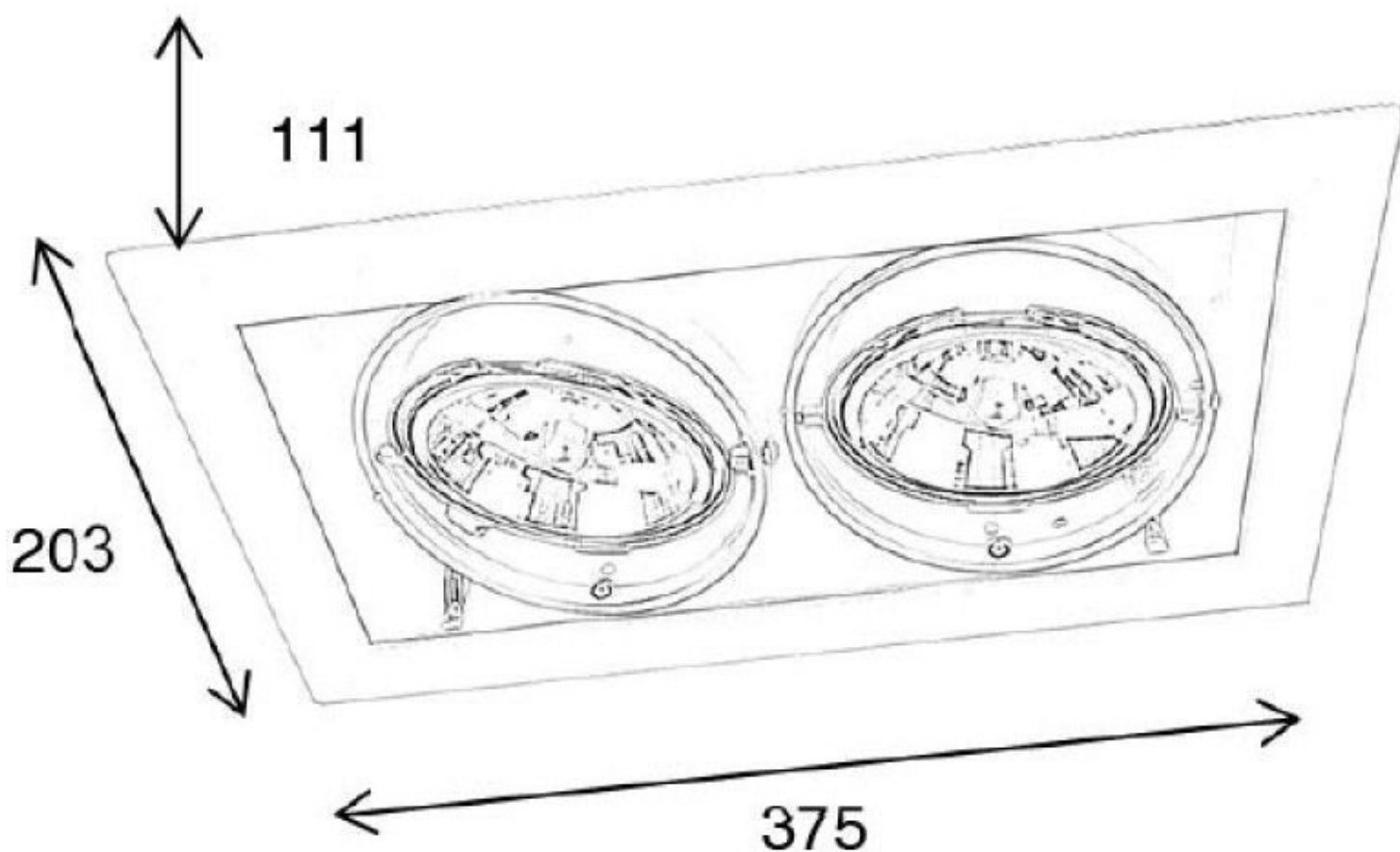
Don't hesitate to contact us for more information about our professional lighting ranges for your points of sale.

Our LED spotlights are guaranteed for 3 years, lifetime 50,000 hours.

Are you looking for a modular solution that allows you to adapt your lighting to the configuration and layout of your sales area or do you simply not have a false ceiling?

Downlight Led 4000 Kelvin

Downlight led - Photo n° 2



## FEATURES

<b>Brand</b>	Spots
<b>Base</b>	
<b>Fitting</b>	
<b>Color</b>	Gris
<b>Ref</b>	spo-enc-led-2893
<b>ID</b>	2893
<b>Delivery schedule</b>	1-3 working days
<b>Category</b>	Downlight led
<b>Type</b>	Store lighting

## DETAIL

Don't hesitate to contact us for more information about our professional lighting ranges for your points of sale.

Our LED spotlights are guaranteed for 3 years, lifetime 50,000 hours.

Are you looking for a modular solution that allows you to adapt your lighting to the configuration and layout of your sales area or do you simply not have a false ceiling?

**Downlight Led 4000 Kelvin**

**Downlight led - Photo n° 3**





## FEATURES

<b>Brand</b>	Spots
<b>Base</b>	
<b>Fitting</b>	
<b>Color</b>	Gris
<b>Ref</b>	spo-enc-led-2893
<b>ID</b>	2893
<b>Delivery schedule</b>	1-3 working days
<b>Category</b>	Downlight led
<b>Type</b>	Store lighting

## DETAIL

Don't hesitate to contact us for more information about our professional lighting ranges for your points of sale.

Our LED spotlights are guaranteed for 3 years, lifetime 50,000 hours.

Are you looking for a modular solution that allows you to adapt your lighting to the configuration and layout of your sales area or do you simply not have a false ceiling?

**Downlight Led 4000 Kelvin**

**Downlight led - Photo n° 4**







## FEATURES

<b>Brand</b>	Spots
<b>Base Fitting</b>	
<b>Color</b>	Gris
<b>Ref ID</b>	spo-enc-led-2893 2893
<b>Delivery schedule</b>	1-3 working days
<b>Category</b>	Downlight led
<b>Type</b>	Store lighting

## DETAIL

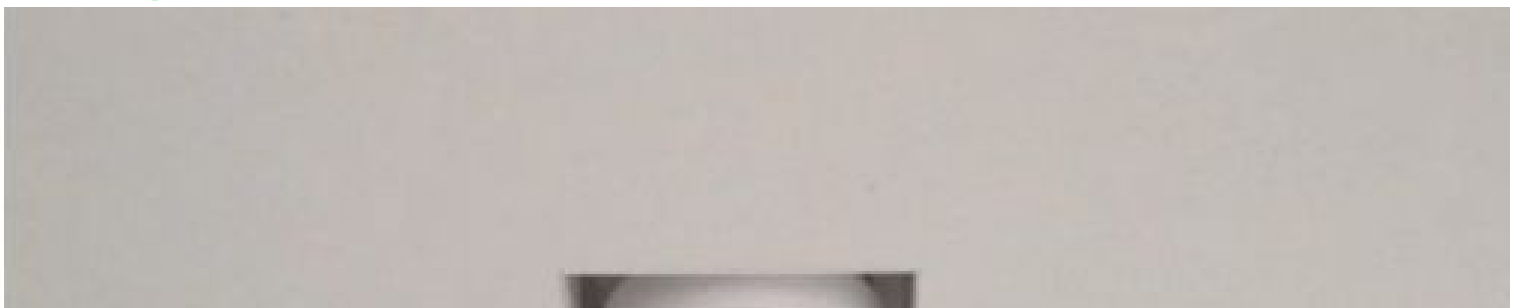
Don't hesitate to contact us for more information about our professional lighting ranges for your points of sale.

Our LED spotlights are guaranteed for 3 years, lifetime 50,000 hours.

Are you looking for a modular solution that allows you to adapt your lighting to the configuration and layout of your sales area or do you simply not have a false ceiling?

**Downlight Led 4000 Kelvin**

**Downlight led - Photo n° 5**





FEATURES

Brand	Spots
Base	
Fitting	
Color	Gris
Ref	spo-enc-led-2893
ID	2893
Delivery schedule	1-3 working days
Category	Downlight led
Type	Store lighting

DETAIL

Don't hesitate to contact us for more information about our professional lighting ranges for your points of sale.

Our LED spotlights are guaranteed for 3 years, lifetime 50,000 hours.

Are you looking for a modular solution that allows you to adapt your lighting to the configuration and layout of your sales area or do you simply not have a false ceiling?