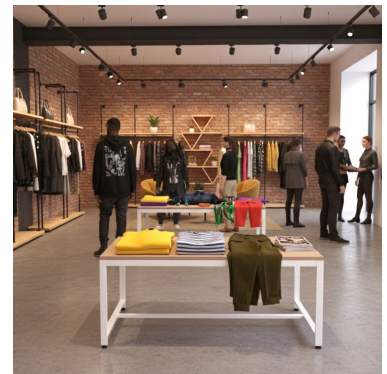


White Store Display Table 135 x 70 x 50cm **400.00 €Ex VAT**

Tables



FEATURES

Brand	Mobilier shopping
Base	
Fitting	
Color	Blanc
Ref	tab-mag-bla-4376
ID	4376
Delivery schedule	1-5 working days
Category	Tables
Type	Store furniture

DETAIL

Suitable for boutiques, concept stores, pop-up stores or market stands, it provides an ideal surface for displaying jewellery, accessories, decorative items or small items. Lightweight yet sturdy, it's easy to move around while ensuring long-lasting use.

Dimensions: Length: 135 cm Width: 70 cm Height : 50 cm Materials: Structure: 40x20 mm tubular steel, white lacquer finish Top: high-quality wood, oak finish (19 mm thick)

DESCRIPTION

This small display table is designed to enhance your products in a professional setting. With its white steel structure and oak finish top, it combines modern aesthetics, stability and natural elegance. Its compact size means it can be used on its own or alongside other furniture to create attractive commercial displays.

White Store Display Table 135 x 70 x 50cm

Tables - Photo n° 1



FEATURES

Brand	Mobilier shopping
Base	
Fitting	
Color	Blanc
Ref	tab-mag-bla-4376
ID	4376
Delivery schedule	1-5 working days
Category	Tables
Type	Store furniture

DETAIL

Suitable for boutiques, concept stores, pop-up stores or market stands, it provides an ideal surface for displaying jewellery, accessories, decorative items or small items. Lightweight yet sturdy, it's easy to move around while ensuring long-lasting use.

Dimensions: Length: 135 cm Width: 70 cm Height : 50 cm Materials: Structure: 40×20 mm tubular steel, white lacquer finish Top: high-quality wood, oak finish (19 mm thick)

White Store Display Table 135 x 70 x 50cm

Tables - Photo n° 2



FEATURES

Brand	Mobilier shopping
Base	
Fitting	
Color	Blanc
Ref	tab-mag-bla-4376
ID	4376
Delivery schedule	1-5 working days
Category	Tables
Type	Store furniture

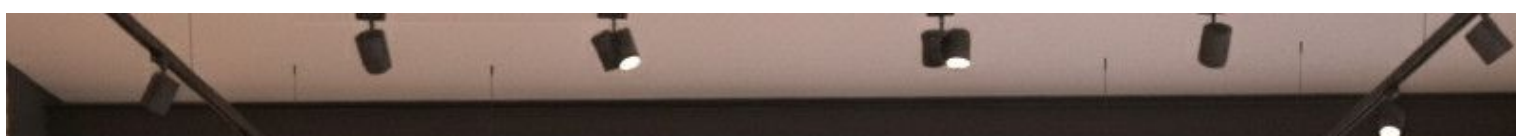
DETAIL

Suitable for boutiques, concept stores, pop-up stores or market stands, it provides an ideal surface for displaying jewellery, accessories, decorative items or small items. Lightweight yet sturdy, it's easy to move around while ensuring long-lasting use.

Dimensions: Length: 135 cm Width: 70 cm Height : 50 cm Materials: Structure: 40x20 mm tubular steel, white lacquer finish Top: high-quality wood, oak finish (19 mm thick)

White Store Display Table 135 x 70 x 50cm

Tables - Photo n° 3





FEATURES

Brand	Mobilier shopping
Base	
Fitting	
Color	Blanc
Ref	tab-mag-bla-4376
ID	4376
Delivery schedule	1-5 working days
Category	Tables
Type	Store furniture

DETAIL

Suitable for boutiques, concept stores, pop-up stores or market stands, it provides an ideal surface for displaying jewellery, accessories, decorative items or small items. Lightweight yet sturdy, it's easy to move around while ensuring long-lasting use.

Dimensions: Length: 135 cm Width: 70 cm Height : 50 cm Materials: Structure: 40x20 mm tubular steel, white lacquer finish Top: high-quality wood, oak finish (19 mm thick)

White Store Display Table 135 x 70 x 50cm

Tables - Photo n° 4





FEATURES

Brand	Mobilier shopping
Base	
Fitting	
Color	Blanc
Ref	tab-mag-bla-4376
ID	4376
Delivery schedule	1-5 working days
Category	Tables
Type	Store furniture

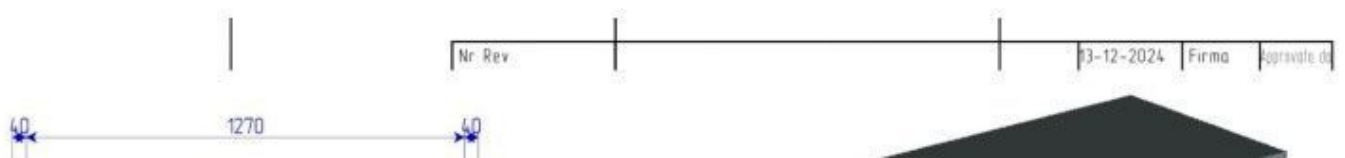
DETAIL

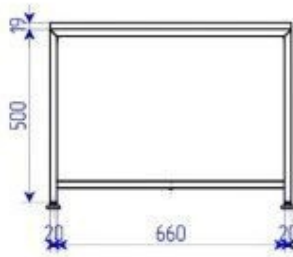
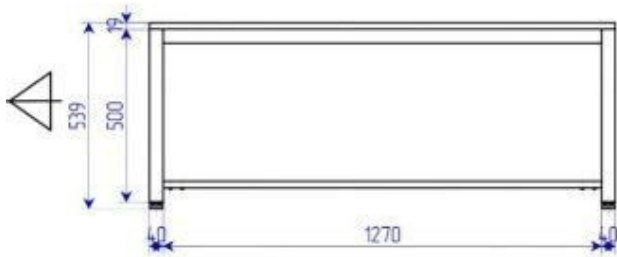
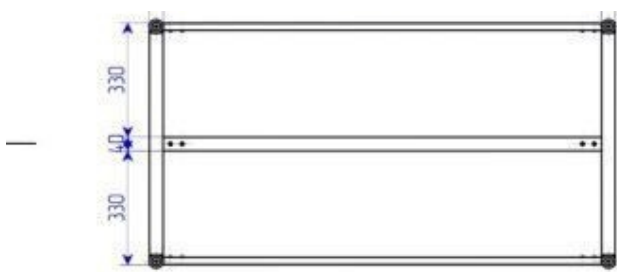
Suitable for boutiques, concept stores, pop-up stores or market stands, it provides an ideal surface for displaying jewellery, accessories, decorative items or small items. Lightweight yet sturdy, it's easy to move around while ensuring long-lasting use.

Dimensions: Length: 135 cm Width: 70 cm Height : 50 cm Materials: Structure: 40x20 mm tubular steel, white lacquer finish Top: high-quality wood, oak finish (19 mm thick)

White Store Display Table 135 x 70 x 50cm

Tables - Photo n° 5





FEATURES

Brand	Mobilier shopping
Base	
Fitting	
Color	Blanc
Ref ID	tab-mag-bla-4376
Delivery schedule	1-5 working days
Category	Tables
Type	Store furniture

DETAIL

Suitable for boutiques, concept stores, pop-up stores or market stands, it provides an ideal surface for displaying jewellery, accessories, decorative items or small items. Lightweight yet sturdy, it's easy to move around while ensuring long-lasting use.

Dimensions: Length: 135 cm Width: 70 cm Height : 50 cm Materials: Structure: 40×20 mm tubular steel, white lacquer finish Top: high-quality wood, oak finish (19 mm thick)