

Black shelving unit 9 levels for shop H240 X 210 X 45CM

Gondolas for stores

1 745.00 €Ex VAT



FEATURES

Brand	Mobilier shopping
Base	
Fitting	
Color	Noir
Ref	meu-eta-noi-3031
ID	3031
Delivery schedule	1-5 working days
Category	Gondolas for stores
Type	Store furniture

DETAIL

Dimensions of this Black shelving unit for shops.

Number of columns	2
Width	2094mm
Depth	442mm
Height	2400mm
Number of Clothes Rails	2
Number of shelves	9

DESCRIPTION

Modular system Bigshop kit
Black shelving unit 9 levels for shop.
This complete modular shelving system is ideal for presenting your products.
Thanks to the clothes rail and 9 shelves that are supplied as standard, you can organize this rack the way you want.

2094mm x 442mm x 2400mm. **Assembly guide**

Black shelving unit 9 levels for shop H240 X 210 X 45CM
Gondolas for stores - Photo n° 1



FEATURES

Brand	Mobilier shopping
Base	
Fitting	
Color	Noir
Ref	meu-eta-noi-3031
ID	3031
Delivery schedule	1-5 working days
Category	Gondolas for stores
Type	Store furniture

DETAIL

Dimensions of this Black shelving unit for shops.
Number of columns 2
Width 2094mm
Depth 442mm
Height 2400mm
Number of Clothes Rails 2
Number of shelves 9

Black shelving unit 9 levels for shop H240 X 210 X 45CM

Gondolas for stores - Photo n° 2



FEATURES

Brand	Mobilier shopping
Base	
Fitting	
Color	Noir
Ref	meu-eta-noi-3031
ID	3031
Delivery schedule	1-5 working days
Category	Gondolas for stores
Type	Store furniture

DETAIL

Dimensions of this Black shelving unit for shops.
Number of columns 2
Width 2094mm
Depth 442mm
Height 2400mm
Number of Clothes Rails 2
Number of shelves 9

Black shelving unit 9 levels for shop H240 X 210 X 45CM

Gondolas for stores - Photo n° 3



FEATURES

Brand	Mobilier shopping
Base	
Fitting	
Color	Noir
Ref	meu-eta-noi-3031
ID	3031
Delivery schedule	1-5 working days
Category	Gondolas for stores
Type	Store furniture

DETAIL

Dimensions of this Black shelving unit for shops.

Number of columns 2
Width 2094mm
Depth 442mm
Height 2400mm
Number of Clothes Rails 2
Number of shelves 9

Black shelving unit 9 levels for shop H240 X 210 X 45CM

Gondolas for stores - Photo n° 4





FEATURES

Brand	Mobilier shopping
Base	
Fitting	
Color	Noir
Ref	meu-eta-noi-3031
ID	3031
Delivery schedule	1-5 working days
Category	Gondolas for stores
Type	Store furniture

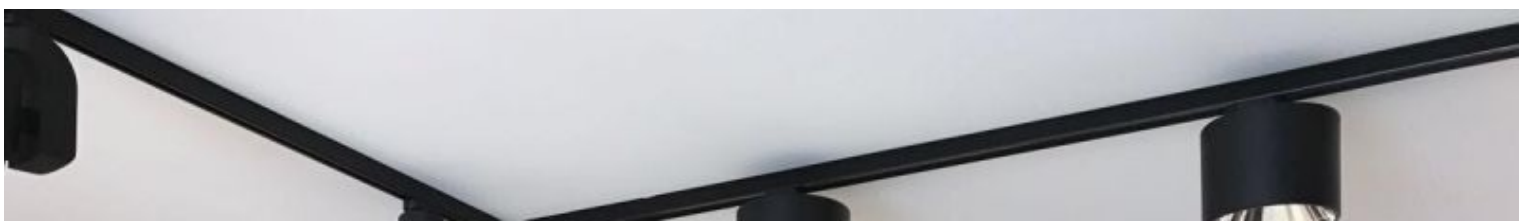
DETAIL

Dimensions of this Black shelving unit for shops.

Number of columns 2
Width 2094mm
Depth 442mm
Height 2400mm
Number of Clothes Rails 2
Number of shelves 9

Black shelving unit 9 levels for shop H240 X 210 X 45CM

Gondolas for stores - Photo n° 5





FEATURES

Brand	Mobilier shopping
Base	
Fitting	
Color	Noir
Ref	meu-eta-noi-3031
ID	3031
Delivery schedule	1-5 working days
Category	Gondolas for stores
Type	Store furniture

DETAIL

Dimensions of this Black shelving unit for shops.

Number of columns 2
 Width 2094mm
 Depth 442mm
 Height 2400mm
 Number of Clothes Rails 2
 Number of shelves 9

Black shelving unit 9 levels for shop H240 X 210 X 45CM
Gondolas for stores - Photo n° 6





FEATURES

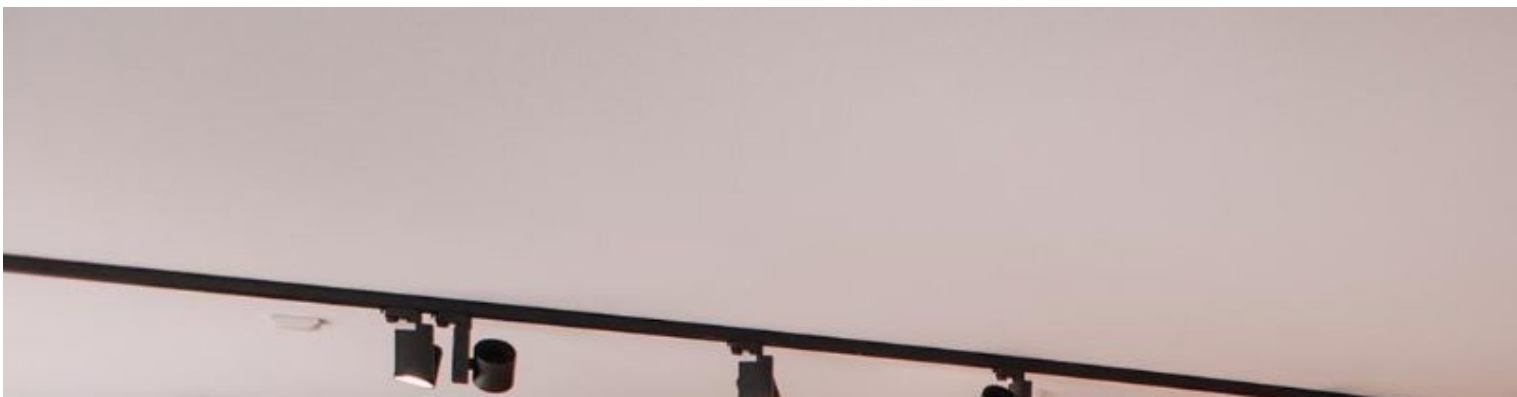
Brand	Mobilier shopping
Base	
Fitting	
Color	Noir
Ref	meu-eta-noi-3031
ID	3031
Delivery schedule	1-5 working days
Category	Gondolas for stores
Type	Store furniture

DETAIL

Dimensions of this Black shelving unit for shops.

Number of columns 2
Width 2094mm
Depth 442mm
Height 2400mm
Number of Clothes Rails 2
Number of shelves 9

Black shelving unit 9 levels for shop H240 X 210 X 45CM
Gondolas for stores - Photo n° 7





FEATURES

Brand	Mobilier shopping
Base	
Fitting	
Color	Noir
Ref	meu-eta-noi-3031
ID	3031
Delivery schedule	1-5 working days
Category	Gondolas for stores
Type	Store furniture

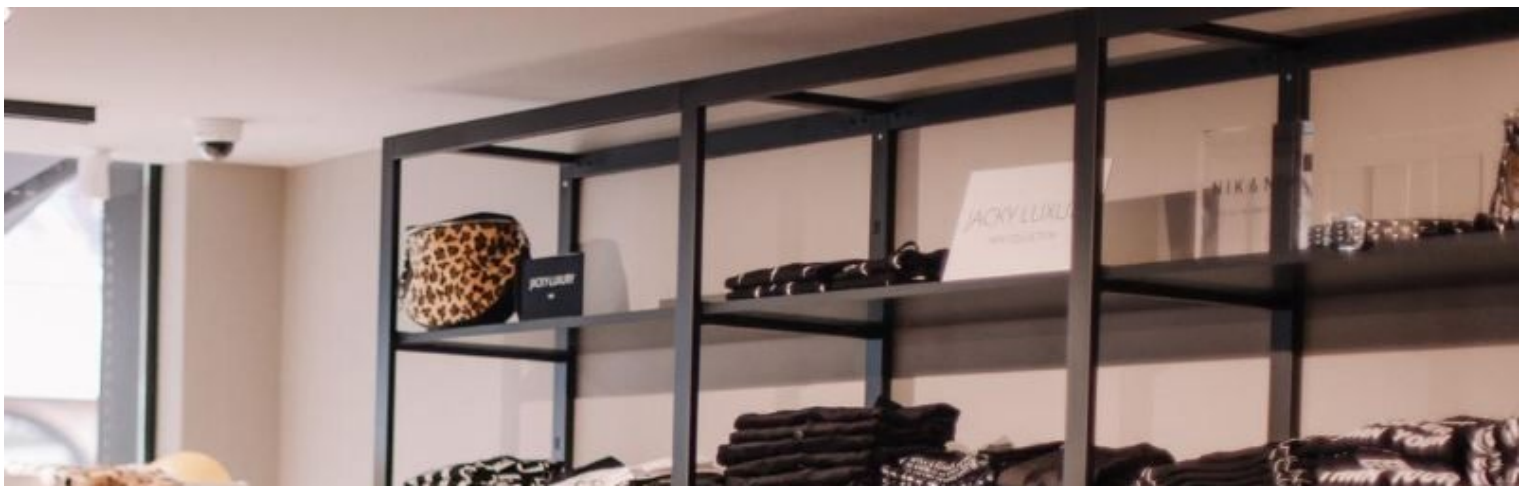
DETAIL

Dimensions of this Black shelving unit for shops.

Number of columns	2
Width	2094mm
Depth	442mm
Height	2400mm
Number of Clothes Rails	2
Number of shelves	9

Black shelving unit 9 levels for shop H240 X 210 X 45CM

Gondolas for stores - Photo n° 8





FEATURES

Brand	Mobilier shopping
Base	
Fitting	
Color	Noir
Ref	meu-eta-noi-3031
ID	3031
Delivery schedule	1-5 working days
Category	Gondolas for stores
Type	Store furniture

DETAIL

Dimensions of this Black shelving unit for shops.

- Number of columns 2
- Width 2094mm
- Depth 442mm
- Height 2400mm
- Number of Clothes Rails 2
- Number of shelves 9