



MANNEQUINS
SHOPPING

MANNEQUINS, BUST AND SHOPFITTING FOR RETAIL STORE

+33 1 84 80 80 09 - info@mannequins-shopping.com

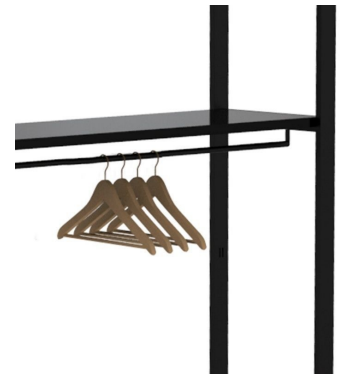
<https://www.mannequins-shopping.com>



Black metal gondola for clothes - H 240 x 210 x 45 cm

Gondolas for stores

1 352.56 €Ex VAT



FEATURES

| | |
|-------------------|---------------------|
| Brand | Mobilier shopping |
| Base | |
| Fitting | |
| Color | Noir |
| Ref | gon-vet-met-1295 |
| ID | 1295 |
| Delivery schedule | 1-5 working days |
| Category | Gondolas for stores |
| Type | Store furniture |

DETAIL

At Mannequins Shopping, we also offer wall mounted gondolas, central gondolas or corner gondolas. You also have the choice between single gondolas or double-sided gondolas to arrange your shelves: metal, wood or galvanized steel or storage. Choose the gondola adapted to your sales area.

DESCRIPTION

Modular system black with Shelves
Autonomous modular system 2094 x 442 x 2400 mm
2 columns with black shiny boards and rods

Black metal gondola for clothes - H 240 x 210 x 45 cm

Gondolas for stores - Photo n° 1



FEATURES

| | |
|-------------------|---------------------|
| Brand | Mobilier shopping |
| Base | |
| Fitting | |
| Color | Noir |
| Ref | gon-vet-met-1295 |
| ID | 1295 |
| Delivery schedule | 1-5 working days |
| Category | Gondolas for stores |
| Type | Store furniture |

DETAIL

At Mannequins Shopping, we also offer wall mounted gondolas, central gondolas or corner gondolas. You also have the choice between single gondolas or double-sided gondolas to arrange your shelves: metal, wood or galvanized steel or storage. Choose the gondola adapted to your sales area.

Black metal gondola for clothes - H 240 x 210 x 45 cm

Gondolas for stores - Photo n° 2



FEATURES

| | |
|-------------------|---------------------|
| Brand | Mobilier shopping |
| Base | |
| Fitting | |
| Color | Noir |
| Ref | gon-vet-met-1295 |
| ID | 1295 |
| Delivery schedule | 1-5 working days |
| Category | Gondolas for stores |
| Type | Store furniture |

DETAIL

At Mannequins Shopping, we also offer wall mounted gondolas, central gondolas or corner gondolas. You also have the choice between single gondolas or double-sided gondolas to arrange your shelves: metal, wood or galvanized steel or storage. Choose the gondola adapted to your sales area.

Black metal gondola for clothes - H 240 x 210 x 45 cm

Gondolas for stores - Photo n° 3



FEATURES

| | |
|--------------------------|---------------------|
| Brand | Mobilier shopping |
| Base | |
| Fitting | |
| Color | Noir |
| Ref | gon-vet-met-1295 |
| ID | 1295 |
| Delivery schedule | 1-5 working days |
| Category | Gondolas for stores |
| Type | Store furniture |

DETAIL

At Mannequins Shopping, we also offer wall mounted gondolas, central gondolas or corner gondolas. You also have the choice between single gondolas or double-sided gondolas to arrange your shelves: metal, wood or galvanized steel or storage. Choose the gondola adapted to your sales area.

Black metal gondola for clothes - H 240 x 210 x 45 cm

Gondolas for stores - Photo n° 4





FEATURES

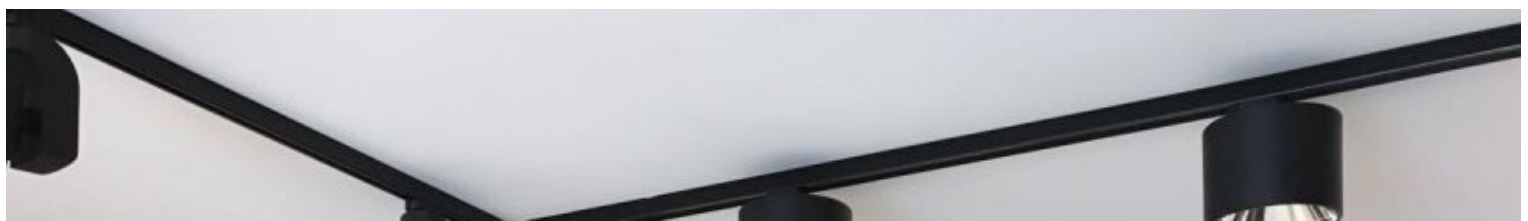
| | |
|--------------------------|---------------------|
| Brand | Mobilier shopping |
| Base | |
| Fitting | |
| Color | Noir |
| Ref | gon-vet-met-1295 |
| ID | 1295 |
| Delivery schedule | 1-5 working days |
| Category | Gondolas for stores |
| Type | Store furniture |

DETAIL

At Mannequins Shopping, we also offer wall mounted gondolas, central gondolas or corner gondolas. You also have the choice between single gondolas or double-sided gondolas to arrange your shelves: metal, wood or galvanized steel or storage. Choose the gondola adapted to your sales area.

Black metal gondola for clothes - H 240 x 210 x 45 cm

Gondolas for stores - Photo n° 5





FEATURES

| | |
|--------------------------|---------------------|
| Brand | Mobilier shopping |
| Base | |
| Fitting | |
| Color | Noir |
| Ref | gon-vet-met-1295 |
| ID | 1295 |
| Delivery schedule | 1-5 working days |
| Category | Gondolas for stores |
| Type | Store furniture |

DETAIL

At Mannequins Shopping, we also offer wall mounted gondolas, central gondolas or corner gondolas. You also have the choice between single gondolas or double-sided gondolas to arrange your shelves: metal, wood or galvanized steel or storage. Choose the gondola adapted to your sales area.

Black metal gondola for clothes - H 240 x 210 x 45 cm

Gondolas for stores - Photo n° 6





FEATURES

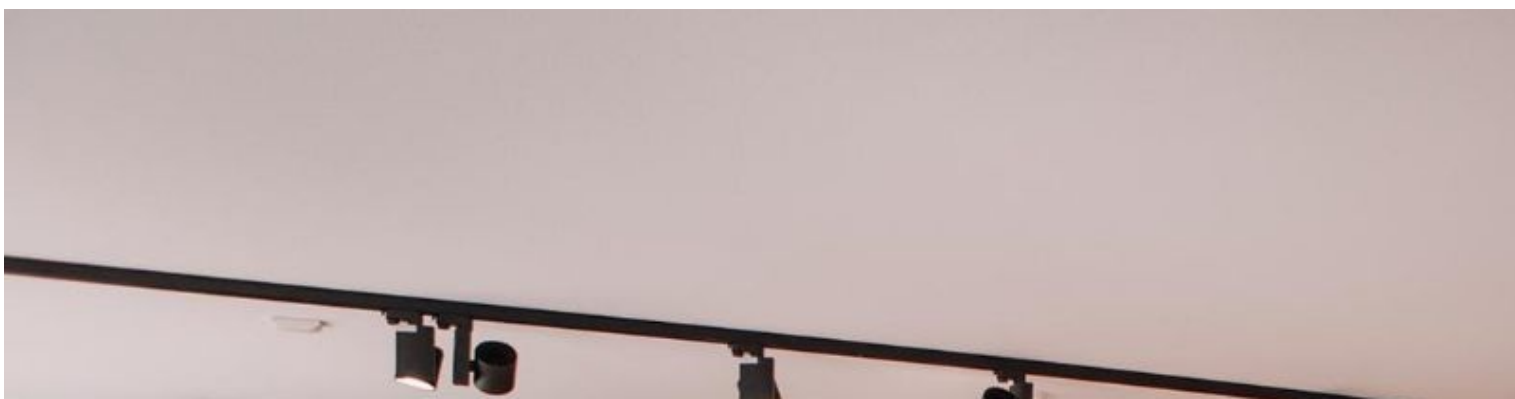
| | |
|--------------------------|---------------------|
| Brand | Mobilier shopping |
| Base | |
| Fitting | |
| Color | Noir |
| Ref | gon-vet-met-1295 |
| ID | 1295 |
| Delivery schedule | 1-5 working days |
| Category | Gondolas for stores |
| Type | Store furniture |

DETAIL

At Mannequins Shopping, we also offer wall mounted gondolas, central gondolas or corner gondolas. You also have the choice between single gondolas or double-sided gondolas to arrange your shelves: metal, wood or galvanized steel or storage. Choose the gondola adapted to your sales area.

Black metal gondola for clothes - H 240 x 210 x 45 cm

Gondolas for stores - Photo n° 7





FEATURES

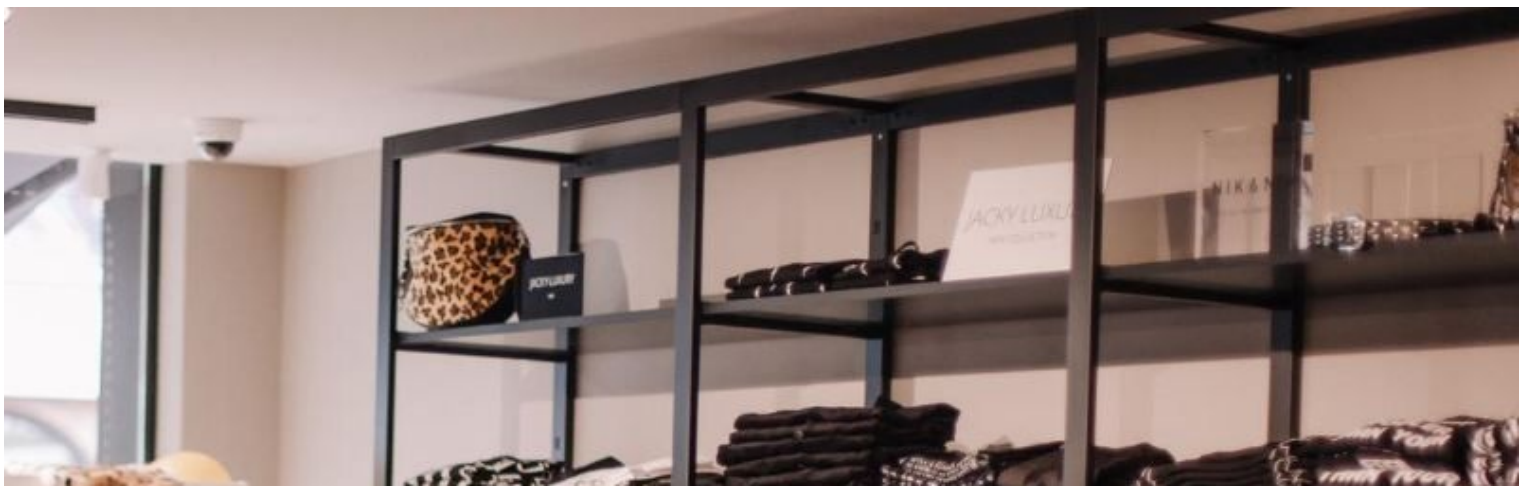
| | |
|--------------------------|---------------------|
| Brand | Mobilier shopping |
| Base | |
| Fitting | |
| Color | Noir |
| Ref | gon-vet-met-1295 |
| ID | 1295 |
| Delivery schedule | 1-5 working days |
| Category | Gondolas for stores |
| Type | Store furniture |

DETAIL

At Mannequins Shopping, we also offer wall mounted gondolas, central gondolas or corner gondolas. You also have the choice between single gondolas or double-sided gondolas to arrange your shelves: metal, wood or galvanized steel or storage. Choose the gondola adapted to your sales area.

Black metal gondola for clothes - H 240 x 210 x 45 cm

Gondolas for stores - Photo n° 8





FEATURES

| | |
|--------------------------|---------------------|
| Brand | Mobilier shopping |
| Base | |
| Fitting | |
| Color | Noir |
| Ref | gon-vet-met-1295 |
| ID | 1295 |
| Delivery schedule | 1-5 working days |
| Category | Gondolas for stores |
| Type | Store furniture |

DETAIL

At Mannequins Shopping, we also offer wall mounted gondolas, central gondolas or corner gondolas. You also have the choice between single gondolas or double-sided gondolas to arrange your shelves: metal, wood or galvanized steel or storage. Choose the gondola adapted to your sales area.