



MANNEQUINS  
SHOPPING

MANNEQUINS, BUST AND SHOPFITTING FOR RETAIL STORE

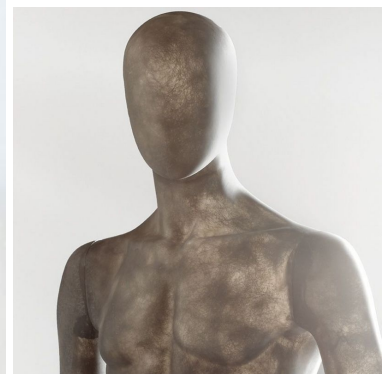
+33 1 84 80 80 09 - [info@mannequins-shopping.com](mailto:info@mannequins-shopping.com)

<https://www.mannequins-shopping.com>



## Male mannequin seated translucent dark gray **399.00 €Ex VAT**

### Display mannequins seated



#### FEATURES

|                   |                           |
|-------------------|---------------------------|
| Brand             | Mannequins vitrine        |
| Base              |                           |
| Fitting           | No fixing                 |
| Color             | Gris                      |
| Ref               | man-vit-hom-3625          |
| ID                | 3625                      |
| Delivery schedule | 1-5 working days          |
| Category          | Display mannequins seated |
| Type              | Mannequins                |

#### DETAIL

Made with the latest generation fiberglass, these mannequins weigh up to 30% less than a classic mannequin.

Dimensions of this egg head seated male display mannequins:

Height: 136cm  
Seat height: 46 cm  
Width: 83cm  
Depth: 83cm  
Chest: 99cm  
Size: 44

#### DESCRIPTION

Highlight your new collection of men's clothing with these seated **fiberglass mannequins**.  
With the light that passes through this tinted resin, attract the attention of your customers and highlight your latest ready-to-wear collections.  
Elegant and chic, these **seated male mannequins** with egg head wear a size 50.  
A modern design, easy to dress thanks to the innovative fastening system at the level of the leg of this mannequin.  
You can place this mannequin on a bench, chair or sofa. (not supplied with the mannequin).

## Male mannequin seated translucent dark gray

Display mannequins seated - Photo n° 1



FEATURES

|                   |                           |
|-------------------|---------------------------|
| Brand             | Mannequins vitrine        |
| Base              |                           |
| Fitting           | No fixing                 |
| Color             | Gris                      |
| Ref               | man-vit-hom-3625          |
| ID                | 3625                      |
| Delivery schedule | 1-5 working days          |
| Category          | Display mannequins seated |
| Type              | Mannequins                |

DETAIL

Made with the latest generation fiberglass, these mannequins weigh up to 30% less than a classic mannequin.

Dimensions of this egg head seated male display mannequins:

Height: 136cm  
Seat height: 46 cm  
Width: 83cm  
Depth: 83cm  
Chest: 99cm  
Size: 44

Male mannequin seated translucent dark gray

Display mannequins seated - Photo n° 2



## FEATURES

|                          |                           |
|--------------------------|---------------------------|
| <b>Brand</b>             | Mannequins vitrine        |
| <b>Base</b>              |                           |
| <b>Fitting</b>           | No fixing                 |
| <b>Color</b>             | Gris                      |
| <b>Ref</b>               | man-vit-hom-3625          |
| <b>ID</b>                | 3625                      |
| <b>Delivery schedule</b> | 1-5 working days          |
| <b>Category</b>          | Display mannequins seated |
| <b>Type</b>              | Mannequins                |

## DETAIL

Made with the latest generation fiberglass, these mannequins weigh up to 30% less than a classic mannequin.

Dimensions of this egg head seated male display mannequins:

Height: 136cm  
Seat height: 46 cm  
Width: 83cm  
Depth: 83cm  
Chest: 99cm  
Size: 44

**Male mannequin seated translucent dark gray**

**Display mannequins seated - Photo n° 3**



## FEATURES

|                          |                           |
|--------------------------|---------------------------|
| <b>Brand</b>             | Mannequins vitrine        |
| <b>Base</b>              |                           |
| <b>Fitting</b>           | No fixing                 |
| <b>Color</b>             | Gris                      |
| <b>Ref</b>               | man-vit-hom-3625          |
| <b>ID</b>                | 3625                      |
| <b>Delivery schedule</b> | 1-5 working days          |
| <b>Category</b>          | Display mannequins seated |
| <b>Type</b>              | Mannequins                |

## DETAIL

Made with the latest generation fiberglass, these mannequins weigh up to 30% less than a classic mannequin.

Dimensions of this egg head seated male display mannequins:

Height: 136cm  
Seat height: 46 cm  
Width: 83cm  
Depth: 83cm  
Chest: 99cm  
Size: 44

**Male mannequin seated translucent dark gray**

**Display mannequins seated - Photo n° 4**





## FEATURES

|                          |                           |
|--------------------------|---------------------------|
| <b>Brand</b>             | Mannequins vitrine        |
| <b>Base</b>              |                           |
| <b>Fitting</b>           | No fixing                 |
| <b>Color</b>             | Gris                      |
| <b>Ref</b>               | man-vit-hom-3625          |
| <b>ID</b>                | 3625                      |
| <b>Delivery schedule</b> | 1-5 working days          |
| <b>Category</b>          | Display mannequins seated |
| <b>Type</b>              | Mannequins                |

## DETAIL

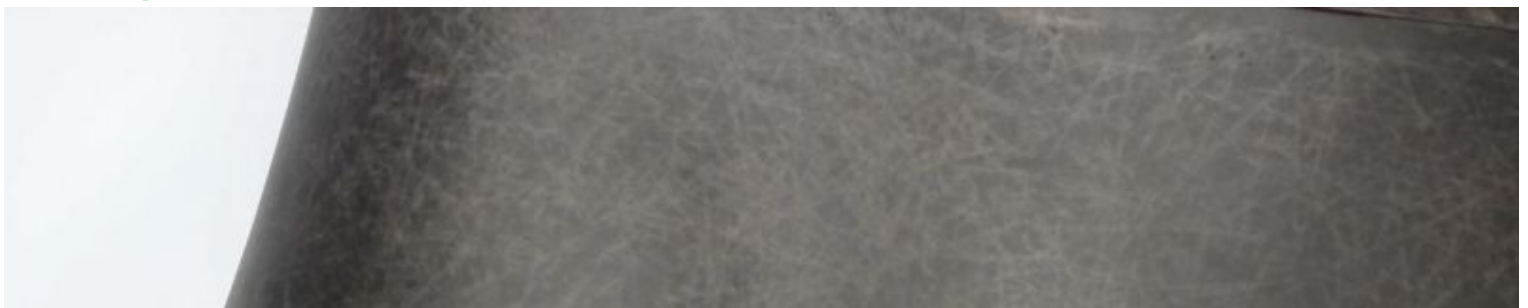
Made with the latest generation fiberglass, these mannequins weigh up to 30% less than a classic mannequin.

Dimensions of this egg head seated male display mannequins:

Height: 136cm  
Seat height: 46 cm  
Width: 83cm  
Depth: 83cm  
Chest: 99cm  
Size: 44

**Male mannequin seated translucent dark gray**

**Display mannequins seated - Photo n° 5**







## FEATURES

|                          |                           |
|--------------------------|---------------------------|
| <b>Brand</b>             | Mannequins vitrine        |
| <b>Base</b>              |                           |
| <b>Fitting</b>           | No fixing                 |
| <b>Color</b>             | Gris                      |
| <b>Ref ID</b>            | man-vit-hom-3625<br>3625  |
| <b>Delivery schedule</b> | 1-5 working days          |
| <b>Category</b>          | Display mannequins seated |
| <b>Type</b>              | Mannequins                |

## DETAIL

Made with the latest generation fiberglass, these mannequins weigh up to 30% less than a classic mannequin.

Dimensions of this egg head seated male display mannequins:

Height: 136cm  
Seat height: 46 cm  
Width: 83cm  
Depth: 83cm  
Chest: 99cm  
Size: 44

**Male mannequin seated translucent dark gray**

**Display mannequins seated - Photo n° 6**



9,00 €

41 192 X



FEATURES

|                   |                           |
|-------------------|---------------------------|
| Brand             | Mannequins vitrine        |
| Base              |                           |
| Fitting           | No fixing                 |
| Color             | Gris                      |
| Ref               | man-vit-hom-3625          |
| ID                | 3625                      |
| Delivery schedule | 1-5 working days          |
| Category          | Display mannequins seated |
| Type              | Mannequins                |

DETAIL

Made with the latest generation fiberglass, these mannequins weigh up to 30% less than a classic mannequin.

Dimensions of this egg head seated male display mannequins:

Height: 136cm  
Seat height: 46 cm  
Width: 83cm  
Depth: 83cm  
Chest: 99cm  
Size: 44