

## Abstract male mannequin grey casual style 350.00 €Ex VAT

### Abstract mannequins



#### FEATURES

<b>Brand</b>	Mannequins vitrine
<b>Base</b>	Round glass
<b>Fitting</b>	Calf
<b>Color</b>	Gris
<b>Ref ID</b>	man-de-vit-4370
<b>Delivery schedule</b>	1-5 working days
<b>Category</b>	Abstract mannequins
<b>Type</b>	Mannequins

#### DETAIL

Showcase mannequin with an abstract design and a balanced posture make it an elegant support for any type of presentation: suit, casual, sportswear or premium collection.

Details and dimensions of this mannequin man

- Colour : Light grey (inspired by Pantone 427C)
- Finish : Matt, high-end satin effect
- Material : Reinforced fibreglass, shock-resistant and easy to clean
- Total height: 189 cm
- Shoulder width: 48 cm
- Chest circumference: 101 cm
- Waist circumference: 81 cm

#### DESCRIPTION

This **light grey abstract men's window mannequin** combines modernity, elegance and sobriety for a refined display of your collections. Its top-of-the-range matt finish, inspired by **Pantone 427C**, offers a subtle and contemporary rendering, ideal for both premium boutiques and urban fashion retailers.

With a neutral face and natural posture, it enhances any outfit ,suit, shirt or casual look, while remaining discreet. Designed in reinforced fibreglass, it combines stability, solidity and durability, guaranteeing reliable use in shops, showrooms or professional exhibitions.

## Abstract male mannequin grey casual style

Abstract mannequins - Photo n° 1



FEATURES

Brand	Mannequins vitrine
Base	Round glass
Fitting	Calf
Color	Gris
Ref ID	man-de-vit-4370
Delivery schedule	1-5 working days
Category	Abstract mannequins
Type	Mannequins

DETAIL

Showcase mannequin with an abstract design and a balanced posture make it an elegant support for any type of presentation: suit, casual, sportswear or premium collection.

Details and dimensions of this mannequin man

- Colour : Light grey (inspired by Pantone 427C)
- Finish : Matt, high-end satin effect
- Material : Reinforced fibreglass, shock-resistant and easy to clean
- Total height: 189 cm
- Shoulder width: 48 cm
- Chest circumference: 101 cm
- Waist circumference: 81 cm
- Hip circumference: 98 cm

Abstact male mannequin grey casual style

Abstract mannequins - Photo n° 2



## FEATURES

<b>Brand</b>	Mannequins vitrine
<b>Base</b>	Round glass
<b>Fitting</b>	Calf
<b>Color</b>	Gris
<b>Ref</b>	man-de-vit-4370
<b>ID</b>	4370
<b>Delivery schedule</b>	1-5 working days
<b>Category</b>	Abstract mannequins
<b>Type</b>	Mannequins

## DETAIL

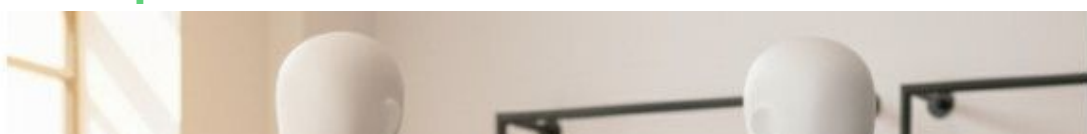
Showcase mannequin with an abstract design and a balanced posture make it an elegant support for any type of presentation: suit, casual, sportswear or premium collection.

Details and dimensions of this mannequin man

- Colour : Light grey (inspired by Pantone 427C)
- Finish : Matt, high-end satin effect
- Material : Reinforced fibreglass, shock-resistant and easy to clean
- Total height: 189 cm
- Shoulder width: 48 cm
- Chest circumference: 101 cm
- Waist circumference: 81 cm
- Hip circumference: 98 cm

**Abstract male mannequin grey casual style**

**Abstract mannequins - Photo n° 3**





## FEATURES

<b>Brand</b>	Mannequins vitrine
<b>Base</b>	Round glass
<b>Fitting</b>	Calf
<b>Color</b>	Gris
<b>Ref</b>	man-de-vit-4370
<b>ID</b>	4370
<b>Delivery schedule</b>	1-5 working days
<b>Category</b>	Abstract mannequins
<b>Type</b>	Mannequins

## DETAIL

Showcase mannequin with an abstract design and a balanced posture make it an elegant support for any type of presentation: suit, casual, sportswear or premium collection.

Details and dimensions of this mannequin man

- Colour : Light grey (inspired by Pantone 427C)
- Finish : Matt, high-end satin effect
- Material : Reinforced fibreglass, shock-resistant and easy to clean
- Total height: 189 cm
- Shoulder width: 48 cm
- Chest circumference: 101 cm
- Waist circumference: 81 cm
- Hip circumference: 98 cm

**Abstact male mannequin grey casual style**

**Abstract mannequins - Photo n° 4**





## FEATURES

<b>Brand</b>	Mannequins vitrine
<b>Base</b>	Round glass
<b>Fitting</b>	Calf
<b>Color</b>	Gris
<b>Ref ID</b>	man-de-vit-4370
<b>Delivery schedule</b>	1-5 working days
<b>Category</b>	Abstract mannequins
<b>Type</b>	Mannequins

## DETAIL

Showcase mannequin with an abstract design and a balanced posture make it an elegant support for any type of presentation: suit, casual, sportswear or premium collection.

Details and dimensions of this mannequin man

- Colour : Light grey (inspired by Pantone 427C)
- Finish : Matt, high-end satin effect
- Material : Reinforced fibreglass, shock-resistant and easy to clean
- Total height: 189 cm
- Shoulder width: 48 cm
- Chest circumference: 101 cm
- Waist circumference: 81 cm
- Hip circumference: 98 cm

**Abstact male mannequin grey casual style**

**Abstract mannequins - Photo n° 5**





## FEATURES

<b>Brand</b>	Mannequins vitrine
<b>Base</b>	Round glass
<b>Fitting</b>	Calf
<b>Color</b>	Gris
<b>Ref ID</b>	man-de-vit-4370
<b>Delivery schedule</b>	1-5 working days
<b>Category</b>	Abstract mannequins
<b>Type</b>	Mannequins

## DETAIL

Showcase mannequin with an abstract design and a balanced posture make it an elegant support for any type of presentation: suit, casual, sportswear or premium collection.

Details and dimensions of this mannequin man

- Colour : Light grey (inspired by Pantone 427C)
- Finish : Matt, high-end satin effect
- Material : Reinforced fibreglass, shock-resistant and easy to clean
- Total height: 189 cm
- Shoulder width: 48 cm
- Chest circumference: 101 cm
- Waist circumference: 81 cm
- Hip circumference: 98 cm

**Abstact male mannequin grey casual style**

**Abstract mannequins - Photo n° 6**





## FEATURES

<b>Brand</b>	Mannequins vitrine
<b>Base</b>	Round glass
<b>Fitting</b>	Calf
<b>Color</b>	Gris
<b>Ref ID</b>	man-de-vit-4370
<b>Delivery schedule</b>	1-5 working days
<b>Category</b>	Abstract mannequins
<b>Type</b>	Mannequins

## DETAIL

Showcase mannequin with an abstract design and a balanced posture make it an elegant support for any type of presentation: suit, casual, sportswear or premium collection.

Details and dimensions of this mannequin man

- Colour : Light grey (inspired by Pantone 427C)
- Finish : Matt, high-end satin effect
- Material : Reinforced fibreglass, shock-resistant and easy to clean
- Total height: 189 cm
- Shoulder width: 48 cm
- Chest circumference: 101 cm
- Waist circumference: 81 cm
- Hip circumference: 98 cm

**Abstact male mannequin grey casual style**

**Abstract mannequins - Photo n° 7**





## FEATURES

<b>Brand</b>	Mannequins vitrine
<b>Base</b>	Round glass
<b>Fitting</b>	Calf
<b>Color</b>	Gris
<b>Ref</b>	man-de-vit-4370
<b>ID</b>	4370
<b>Delivery schedule</b>	1-5 working days
<b>Category</b>	Abstract mannequins
<b>Type</b>	Mannequins

## DETAIL

Showcase mannequin with an abstract design and a balanced posture make it an elegant support for any type of presentation: suit, casual, sportswear or premium collection.

Details and dimensions of this mannequin man

- Colour : Light grey (inspired by Pantone 427C)
- Finish : Matt, high-end satin effect
- Material : Reinforced fibreglass, shock-resistant and easy to clean
- Total height: 189 cm
- Shoulder width: 48 cm
- Chest circumference: 101 cm
- Waist circumference: 81 cm
- Hip circumference: 98 cm