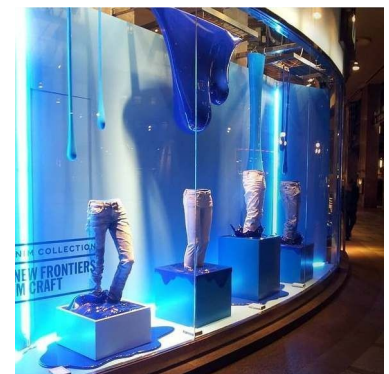
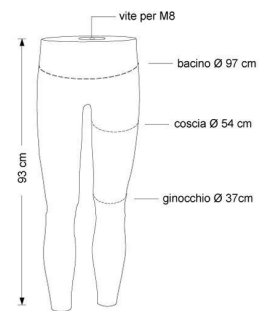




Flexible male mannequins legs with base 249.00 €Ex VAT Leg mannequins



FEATURES

Brand	Mannequins vitrine
Base	Metal rectangle
Fitting	Buttock
Color	Noir
Ref	jam-de-man-2807
ID	2807
Delivery schedule	1-5 working days
Category	Leg mannequins
Type	Accessories for mannequins

DETAIL

New flexible male legs mannequin in black EPP (polypropylene foam) with screw M8 \ black adjustable square base 280x280 mm
Recyclable - High fit - Light weight - Shock resistant

DESCRIPTION

Give rhythm to your windows thanks to these **flexibles leg mannequins** black foam on base fixation buttocks. Mannequins Shopping is the supplier of professionals for the clothing store layout, offers a wide range of mannequins and **flexible legs**, child and adult **mannequins** articulated, products to complete the layout of your shop and the layout of your business , highlighting the flagship products of each of your collections and bring to life your staging of showcases.

Flexible male legs mannequins to display your jeans in boutique, showroom and stores.

Flexible male mannequins legs with base

Leg mannequins - Photo n° 1



FEATURES

Brand	Mannequins vitrine
Base	Metal rectangle
Fitting	Buttock
Color	Noir
Ref	jam-de-man-2807
ID	2807
Delivery schedule	1-5 working days
Category	Leg mannequins
Type	Accessories for mannequins

DETAIL

New flexible male legs mannequin in black EPP (polypropylene foam) with screw M8 \ black adjustable square base 280x280 mm
Recyclable - High fit - Light weight - Shock resistant

Flexible male mannequins legs with base

Leg mannequins - Photo n° 2



FEATURES

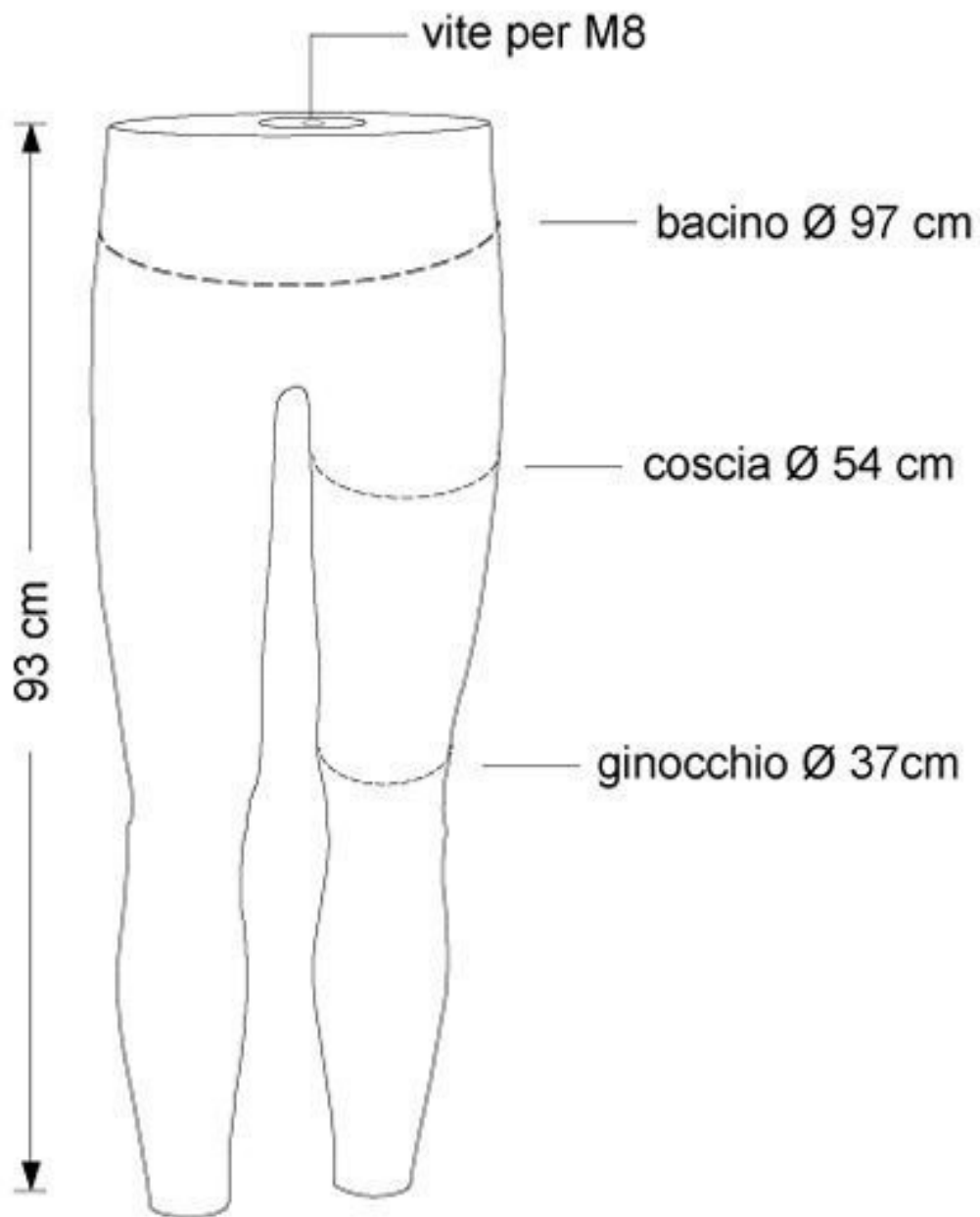
Brand	Mannequins vitrine
Base	Metal rectangle
Fitting	Buttock
Color	Noir
Ref	jam-de-man-2807
ID	2807
Delivery schedule	1-5 working days
Category	Leg mannequins
Type	Accessories for mannequins

DETAIL

New flexible male legs mannequin in black EPP (polypropylene foam) with screw M8 \ black adjustable square base 280x280 mm
Recyclable - High fit - Light weight - Shock resistant

Flexible male mannequins legs with base

Leg mannequins - Photo n° 3



FEATURES

Brand	Mannequins vitrine
Base	Metal rectangle
Fitting	Buttock
Color	Noir
Ref	jam-de-man-2807
ID	2807
Delivery schedule	1-5 working days
Category	Leg mannequins
Type	Accessories for mannequins

DETAIL

New flexible male legs mannequin in black EPP (polypropylene foam) with screw M8 \ black adjustable square base 280x280 mm
Recyclable - High fit - Light weight - Shock resistant

Flexible male mannequins legs with base

Leg mannequins - Photo n° 4





FEATURES

Brand	Mannequins vitrine
Base	Metal rectangle
Fitting	Buttock
Color	Noir
Ref	jam-de-man-2807
ID	2807
Delivery schedule	1-5 working days
Category	Leg mannequins
Type	Accessories for mannequins

DETAIL

New flexible male legs mannequin in black EPP (polypropylene foam) with screw M8 \ black adjustable square base 280x280 mm
Recyclable - High fit - Light weight - Shock resistant